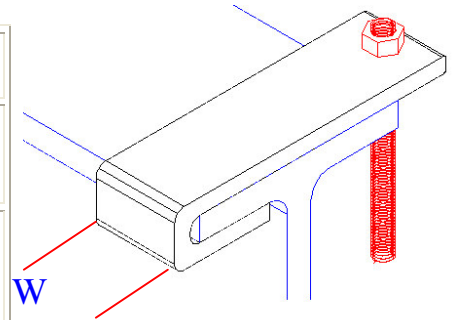


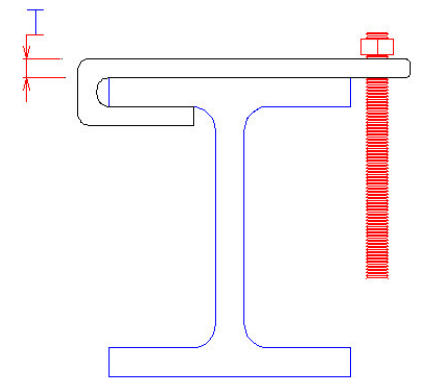
BEAM CLAMPS

1) Top Beam Hook

Material	Carbon steel 37
Finish	<ul style="list-style-type: none"> ➤ H.D.G.A.F ➤ Electro plated
TECHNICAL DATA	<ul style="list-style-type: none"> ➤ Designed for attaching hanger rod to the top flange of beam. ➤ Allows 3mm clearance between hanger rod and flange of beam. ➤ Hanger rod not included

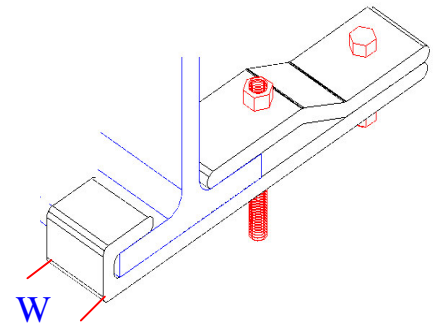


Catalog No.		Rod size	Thick (T)	Width (W)	Design load (KN)
H.D.G.A.F	Electro plated				
B3TBCSH101	B3TBCSP101	10	5	32	1.33
B3TBCSH102	B3TBCSP102	12	6	32	2.22
B3TBCSH103	B3TBCSP103	16	10	38	3.11
B3TBCSH104	B3TBCSP104	19	10	50	4.45
B3TBCSH105	B3TBCSP105	22	12.5	65	5.34



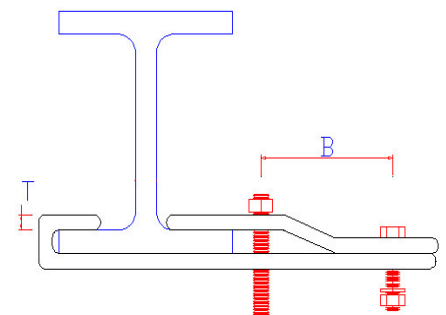
2) Side Beam Clamp

Material	Carbon steel 37.
Finish	<ul style="list-style-type: none"> ➤ H.D.G.A.F ➤ Electro plated
TECHNICAL DATA	<ul style="list-style-type: none"> ➤ Designed for attaching hanger rod to the side flange of beam. ➤ Allows 3mm clearance between hanger rod and flange of beam. ➤ Hanger rod not included ➤ Bolt and nut included



2-1) Model (A)

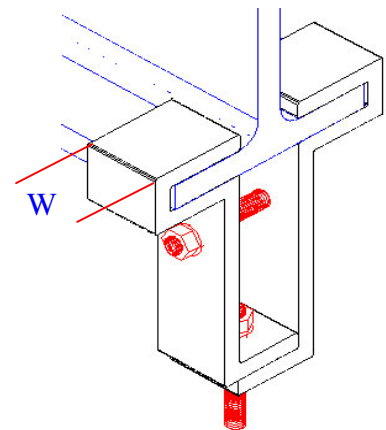
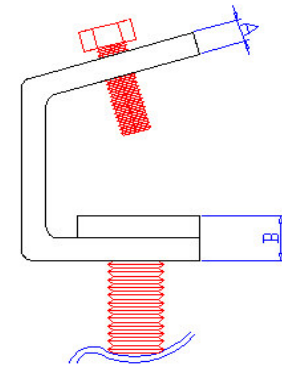
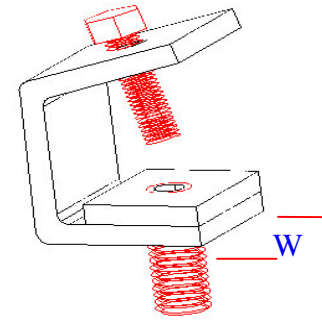
Catalog No.	Rod size	(B)	Thick (T)	Width (W)	Design load (KN)
B3SBCSH101	10	80	5	32	1.33
B3SBCSH102	12	80	6	32	2.22
B3SBCSH103	16	80	10	38	3.11
B3SBCSH104	19	80	10	50	4.45
B3SBCSH105	22	80	12.5	65	8.9



2-2)Model (B)

Material	Carbon steel 37
Finish	<ul style="list-style-type: none"> ➤ H.D.G.A.F ➤ Electro plated
TECHNICAL DATA	<ul style="list-style-type: none"> ➤ Designed for attaching hanger rods under beam flanges .

Catalog No.	Bolt Size	Rod size	(A)	(B)	Width (W)	Design Load (KN)
B3SBCSH106	M12X70	12	10	20	45	4.45
B3SBCSH107	M10X50	10	6	12	35	2

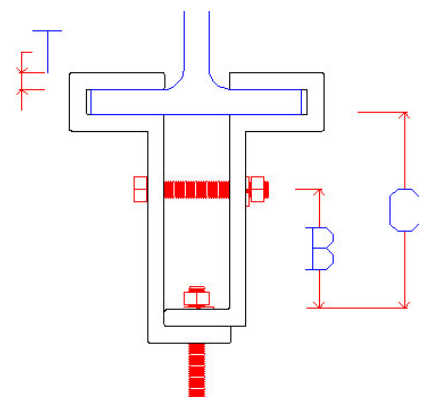


3)Bottom Beam Clamp

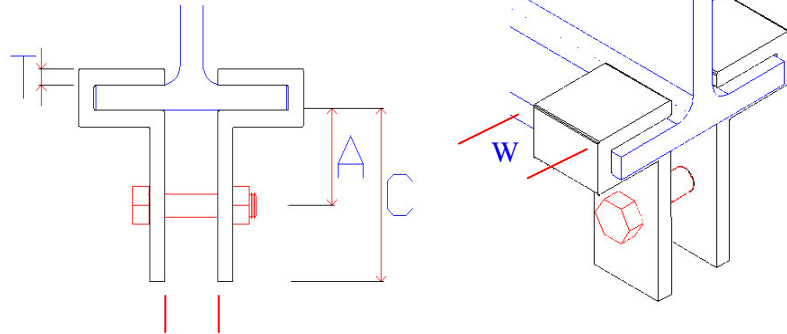
Material	Carbon steel 37
Finish	<ul style="list-style-type: none"> ➤ H.D.G.A.F ➤ Electro plated
TECHNICAL DATA	<ul style="list-style-type: none"> ➤ Designed for attaching hanger rods under beam flanges . ➤ Hanger rod not included ➤ Bolt and nut included

3-1)Model (A)

Catalog No.	Rod size	(B)	(C)	Thick (T)	Width (W)	Design load (KN)
B3BBCSH101	10	75	100	6	32	2.44
B3BBCSH102	12	75	100	6	38	3.78
B3BBCSH103	16	80	115	10	38	4.89
B3BBCSH104	19	80	115	10	50	6.67
B3BBCSH105	22	88	130	12.5	50	11.56
B3BBCSH106	25	88	140	12.5	65	19.12
B3BBCSH107	28	88	140	16	75	27.13
B3BBCSH108	32	88	140	16	100	35.58



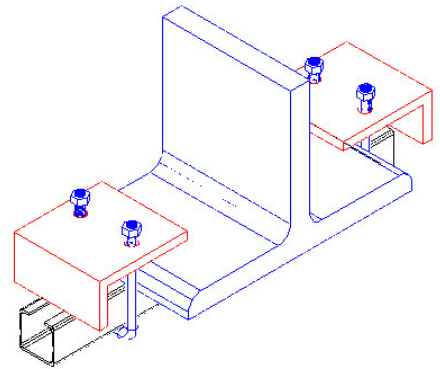
3-3)Model (B)



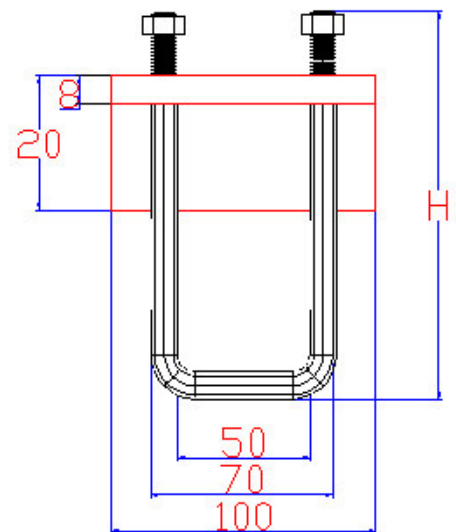
Catalog No.	Bolt Size	(A)	(B)	(C)	Thick (T)	Width (W)	Design Load (KN)
B3BBCSH109	M10X50	35	16	55	6	32	3.11
B3BBCSH110	M12X70	48	22	75	12	50	6.67
B3BBCSH111	M14X80	65	30	110	16	100	22.24

4)Beam Clamps For Mounting Channel

Material	Carbon steel 37
Finish	<ul style="list-style-type: none"> ➤ H.D.G.A.F ➤ Electro plated
TECHNICAL DATA	<ul style="list-style-type: none"> ➤ Designed for mounting C- channel under beam flanges at right angles to the beam ➤ Design Load 5.7(KN)

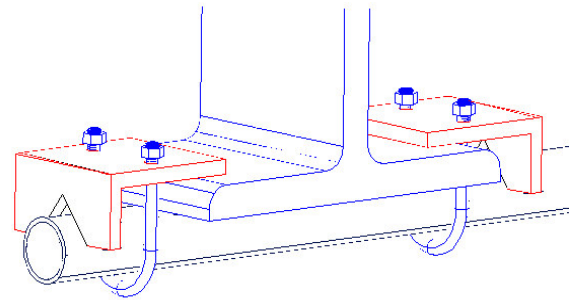
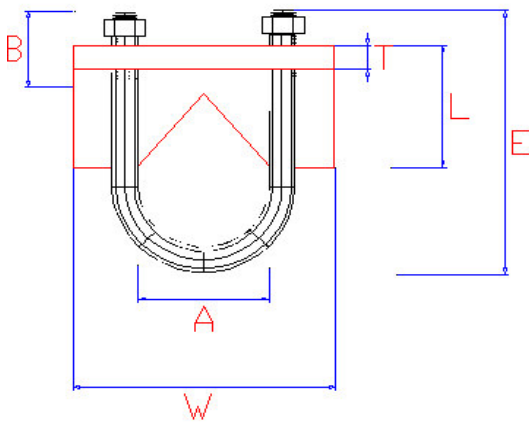


Catalog No.		Channel size	U-Bolt Size	H
H.D.G.A.F	Electro plated			
B3MCBESH101	B3MCBCSP101	40X40	10	90
B3MCBESH102	B3MCBCSP102	40X20	10	70
B3MCBESH103	B3MCBCSP103	30X15	10	80
B3MCBESH104	B3MCBCSP104	80X40	10	130



5) Beam Clamps For Mounting Pipes

Material	Carbon steel 37
Finish	<ul style="list-style-type: none"> ➤ H.D.G.A.F ➤ Electro plated
TECHNICAL DATA	<ul style="list-style-type: none"> ➤ Designed for mounting pipes under beam flanges at right angles to the beam.



Catalog No.		Pipe size	U-Bolt Size	(A)	(B)	Thick (T)	Width (W)	E	L
H.D.G.A.F	Electro plated								
B3MPBCSH101	B3MPBCSP101	13	8	24	45	8	70	70	25
B3MPBCSH102	B3MPBCSP102	19	8	28	45	8	75	75	25
B3MPBCSH103	B3MPBCSP103	25	8	39	45	8	87	87	30
B3MPBCSH104	B3MPBCSP104	32	8	43	45	8	90	90	30
B3MPBCSH105	B3MPBCSP105	38	8	50	45	8	98	98	35
B3MPBCSH106	B3MPBCSP106	50	10	60	50	10	110	110	35
B3MPBCSH107	B3MPBCSP107	63	10	75	50	10	135	135	40
B3MPBCSH108	B3MPBCSP108	76	10	90	50	10	150	150	40
B3MPBCSH109	B3MPBCSP109	90	10	105	50	10	165	165	50
B3MPBCSH110	B3MPBCSP110	101	10	115	55	10	175	175	50